

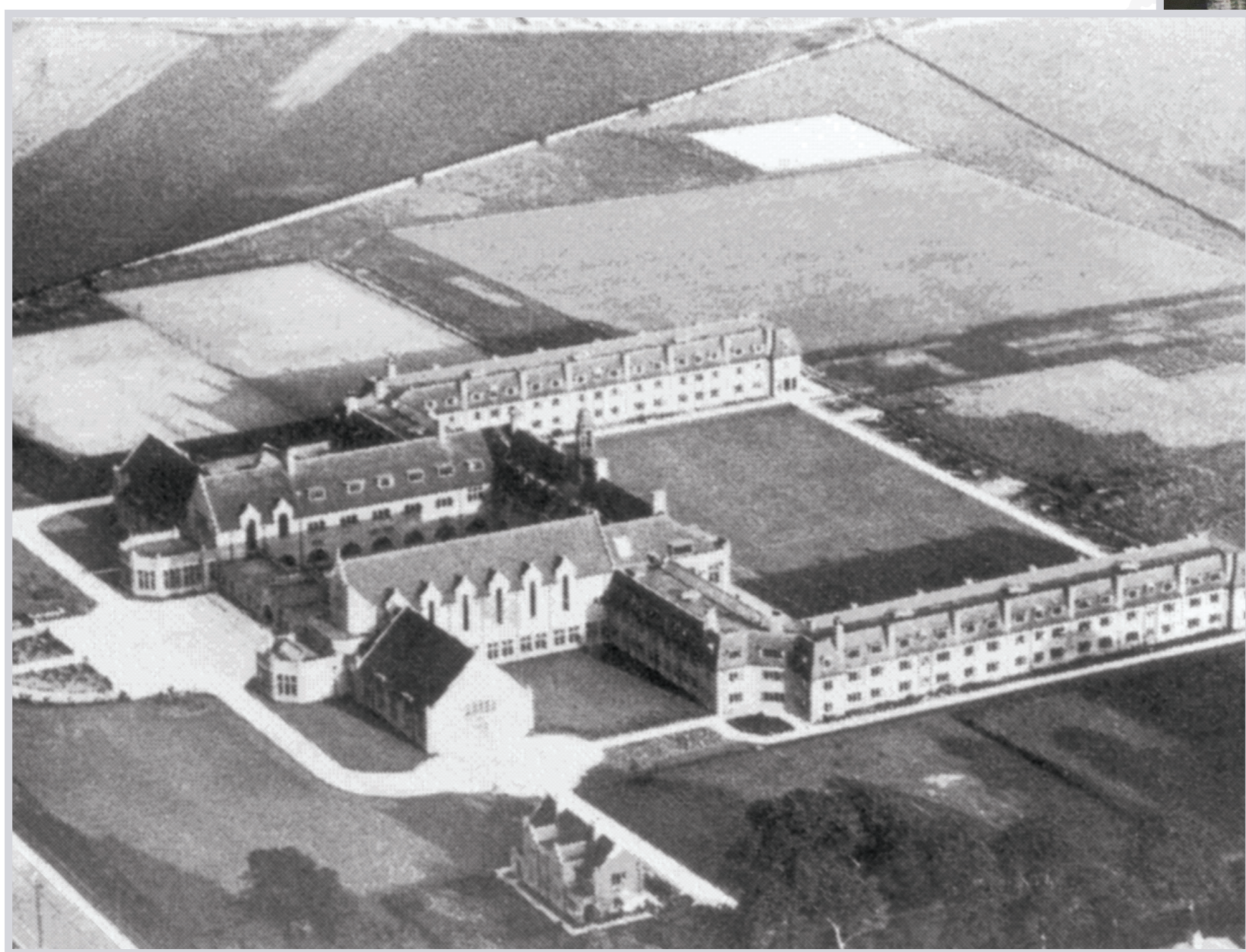


LIVERPOOL HOPE
UNIVERSITY

175 YEARS OF ACADEMIC
EXCELLENCE

• 1930 - 1945 •

COPING WITH ADVERSITY



The colleges continued to flourish and make education available to all. This was key in helping to overcome poverty, social and economic difficulties.

Liverpool saw difficult periods during the 20th century, arising from war, economic hardship and sectarianism. Relocating to Childwall in the Liverpool suburbs in May 1930, Warrington College became S. Katherine's College in 1938. During the Second World War staff and students were evacuated to the Lake District. This enabled the college building to function as a hospital for injured servicemen.