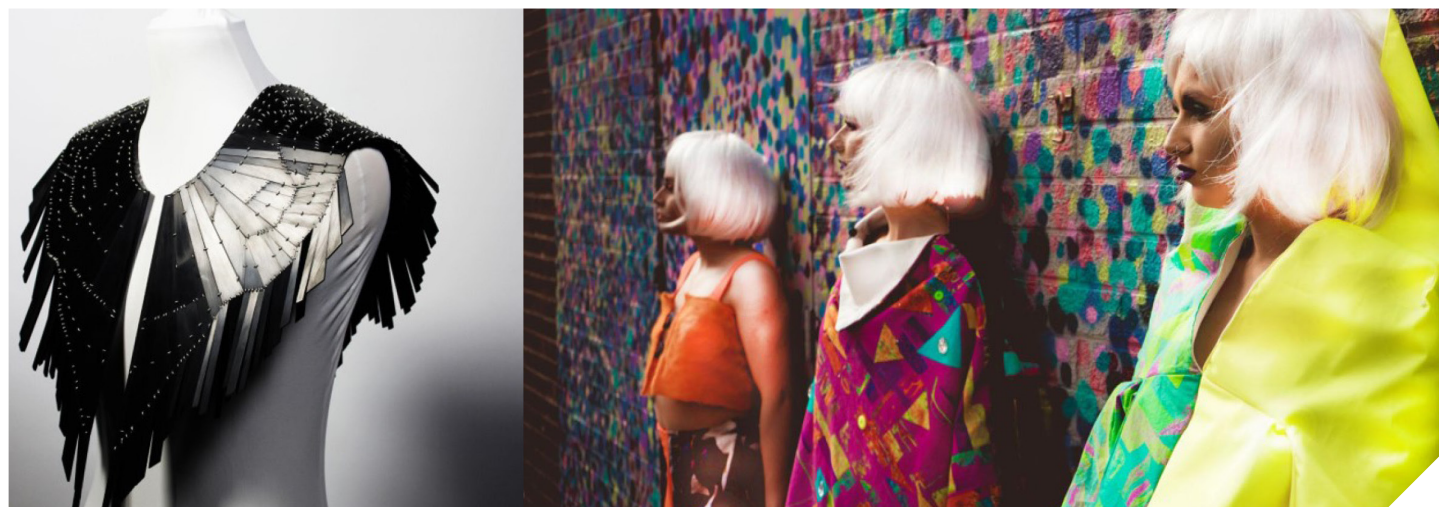


# Contemporary Fashion Design\*

**UCAS Code: Combined Honours only** (please see website for details)

**Duration: 3 years | Full-time | Creative Campus | 2026/2027**

Placement year opportunities available



## Course Overview

Our Contemporary Fashion Design course is a dynamic, practice-based programme that explores current themes such as inclusivity and adaptable fashion. Centred on the possibilities of adorning the body and experimenting with materials, this contemporary fashion design degree equips you with the fundamentals of designing and understanding the wider role of fashion in society.

Working with external partners in Liverpool's Fabric District and beyond, the contemporary fashion design course encourages interdisciplinary approaches, exploring how fashion and regenerative practices can positively impact people's lives and respond to today's challenges.

Focusing on expanded fashion concepts such as brand awareness, styling, image-making, and promotion, the contemporary fashion design degree provides the opportunity to specialise and create a bespoke portfolio aligned with industry expectations.

Taught by established practitioners, the contemporary fashion design course offers access to state-of-the-art equipment, workshops, and studio spaces at the Creative Campus. As a combined honours option, this contemporary fashion design degree allows you to integrate fashion practice with other subjects, shaping your individual approach and creative direction.

## Entry Requirements

This course follows the standard University entry requirements. Please see the website for further information.

*\*subject to validation*

## Fees and Additional Costs

The tuition fees for 2026/2027 are £9,790 for full-time undergraduate courses.

You will also need to consider the cost of your accommodation each year whilst you study at university.

Visit our accommodation webpages for further details about our Halls of Residence:  
[www.hope.ac.uk/halls](http://www.hope.ac.uk/halls)

Applicants will need access to a computer if course delivery is switched to online. The University has a laptop lending service if remote study is necessary.



**LIVERPOOL  
HOPE  
UNIVERSITY**

1844

## CONTACT

T: +44 (0)151 291 3000

E: [courses@hope.ac.uk](mailto:courses@hope.ac.uk)

[www.hope.ac.uk](http://www.hope.ac.uk)

# Contemporary Fashion Design Curriculum

## Year One

### Contemporary Fashion: Fundamentals

Working within the studio, you will be introduced to the fundamentals of practical fashion through exploring a range of making skills, relevant machinery and processes. The diagnostic year will focus on textiles for fashion, fashion accessories and image making and styling. The emphasis will be on experimentation and learning the basics through material-led investigation.

### Tutorial

The weekly student-led tutorial will provide time to come together as a group to share practice, develop study skills and connect to the wider university network.

### Design Development and Fashion Illustration

In this element, you will be developing core design and illustration skills which underpin your practical work. The sessions will focus on areas including image making, fashion photography and digital explorations.

### Visual Culture

The Visual Culture lectures will introduce contemporary themes, artists and designers within the field. Each lecture will highlight research materials and theoretical approaches, which will shape and direct your practice.

## Year Two

### Contemporary Fashion: Directions

In year two, you will be focused on working on a live brief with one of our Liverpool partners. Projects initiated by the programme will have an emphasis on sustainable and ethical practices and community engagement. Collaborations with local organisations, communities and practitioners will enable new experiences and directions for practice.

### Professional Development

This element will focus on core professional skills which will support your practice and direction within the industry. These sessions support your live project work, focusing on team-work, project planning, communication and presentation. In the final semester, you will also identify an appropriate work experience placement.

### Tutorial

The weekly student-led tutorial will provide time to come together as a group to share practice, develop study skills and connect to the wider university network.

### Visual Culture

The Visual Culture lectures will continue to highlight a series of contemporary work, supported by external visits. Each lecture will highlight research materials and theoretical approaches, which will shape and direct your practice.

## Year Three

### Contemporary Fashion: Futures

The final major project at year three, enables you to define your fashion practice and personal approaches. A series of masterclasses and guidance throughout the year will support you in the realisation of a fashion focused collection of work. Your practice-based research could take a variety of forms that might include concept or garment design, styling, print and accessories. You will have the opportunity to exhibit your work within the Cornerstone Gallery at the Creative Campus. Year three also provides the opportunity to bring together your combined subjects as a possible source of inspiration and output.

### Professional Development

In this final year, your professional development research will enable you to clarify and define your personal ambitions. You will experience a broad range of workshops, including careers mapping, online presence, advanced digital application and professional engagement tools.

### Tutorial

The weekly student-led tutorial will provide time to come together as a group to share practice, engage in group critiques and develop study skills and connect to the wider university network.

### Visual Culture

The Visual Culture lectures will continue to highlight a series of contemporary work, supported by external visits. Each session will highlight research materials and theoretical approaches, which will shape and direct your practice.

## COURSE STRUCTURE

Teaching on this degree includes lectures, practical seminars, technical masterclasses and weekly group tutorials.

In addition to formal teaching, you are expected to spend a number of hours each week studying independently: researching and practising your technical skills.

Access to studios and facilities outside of taught contact time is provided to enhance individual and flexible independent study.

## ASSESSMENT AND FEEDBACK

Throughout your three years of study, you will have informal and formal assessments where you will be given written and verbal feedback on your work.

Formal assessments are normally held at the end of each academic year and you are required to complete a series of assessment tasks. These typically include a portfolio of creative work, accompanied by contextual documentation. In your final year, you are also required to complete a research project/dissertation.

You will have the opportunity to discuss your work during regular one-to-one tutorials.



LIVERPOOL  
HOPE  
UNIVERSITY

1844

## CONTACT

T: +44 (0)151 291 3000

E: [courses@hope.ac.uk](mailto:courses@hope.ac.uk)

[www.hope.ac.uk](http://www.hope.ac.uk)